

Dear participant,

You are invited to join the webinar:

Second Webinar of the 2018 Thematic Network cycle by Smart Healthy Age Friendly Environments (SHAFE)

Joint Statement: sharing the results and asking for comments

Joint Statement produced under the 2018 Thematic Networks

Tuesday 09 October 2018, 16.00 – 17.00

The EU Health Policy Platform will host a live webinar, following this agenda:

Introduction

- Giulio Gallo, Deputy Head of Unit, Country Knowledge and Scientific Committees, DG SANTE C2, European Commission

SHAFE Research outcomes

- Survey, interviews and desk research
- Willeke van Staaldunen, Co-founder AFEdeemy

Draft-Joint Statement SHAFE and recommendations

- Carina Dantas, Innovation Director, Cáritas Diocesana de Coimbra

Q&A and suggestions

The floor will be open for participants to interact, discuss the revisions and provide comments on the draft-Joint Statement and recommendations.

The latest news on SHAFE will be available on the [news page](#) prior to the webinar.

Practical Information

(1) Add the webinar to your Outlook calendar

Click on this link and save the Outlook calendar invitation on your desktop.

The webinar will be automatically pinned in your Outlook calendar.

<https://ecwacs.webex.com/ecwacs/j.php?MTID=m3767a4663cd467c311f185b6ba9d0ea9>

(2) To join the Webinar, click on the link below:

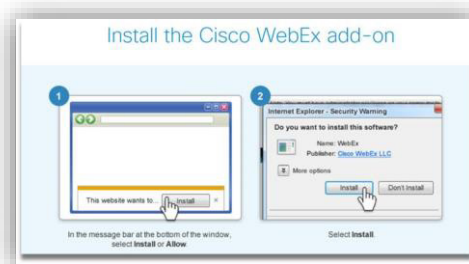
Tuesday 09 October 2018, 16.00 – 17.00

<https://ecwacs.webex.com/ecwacs/j.php?MTID=m3767a4663cd467c311f185b6ba9d0ea9>

Enter:

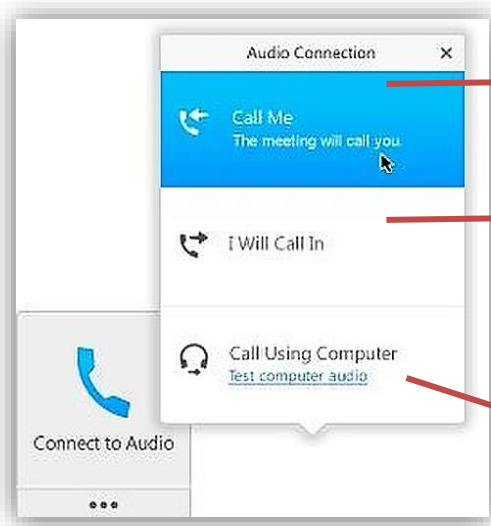
- ✓ your name,
- ✓ your email address
- ✓ Access code: 165 613 582

Note: If you have never used this application before, you might be asked to install the Cisco WebEx add-on. Just follow the steps as indicated on your screen.



(3) Audio connection:

To connect to the audio of the webinar, you can choose among these three options that will appear on your screen:



Call me: the meeting will call you. Please click, enter your phone number and country as requested.

I will call in: you will call

- ✓ +32 (0)22008147 from Belgium
- +352 24871056 from Luxembourg
- [More country numbers](#)
- ✓ And type your **access code:** 165 613 582

Call using computer: you will need a headset.

(4) Video connection:

You can also dial in using your videoconference system: 165613582@ecwacs.webex.com

Can't join the meeting?

- Watch the tutorial [How to join a WebEx meeting](#) in [French](#) or in [English](#)
- Read the users' guide [Getting started Joining a WebEx Meeting.](#)
- Contact us: sante-hpp@ec.europa.eu

We are looking forward to welcoming you online.

With kind regards,

The EU Health Policy Platform team



European Commission

Directorate-General for Health and Food Safety
Unit C2: Country Knowledge and Scientific Committees
L 2557 Luxembourg

All the information you need on [Public Health Website](#)

Follow us on Twitter [@EU_Health](#) and join the conversation on [#EUHPP](#)

Disclaimer: Note on processing of personal data in the context of the webinar:

By registering and logging on to this Webinar, the participant agrees to the following:

- personally identifiable information of participants may be heard, seen, read, collected, or used by DG SANTE as the organizer and by the other Webinar participants;
- any communication or information transmitted during the Webinar, such as voice, instant messages, or presentations are available to and may be recorded and further used by DG SANTE as the organiser;
- DG SANTE may further use the information available on the Webinar organization such as the invitee lists, the attendee logs and the Webinar subject matter information.

This Webinar participants shall apply appropriate circumspection when directly disclosing their personally identifiable information or personally sensitive data on the occasion of the Webinar, since this information may be collected and used by other participants.

Regulation (EC) No 45/2001 regarding the processing of personal data is applicable in the context of this Webinar organized by DG SANTE as the Directorate-General of Health and Food Safety.