

Healthy ageing in cities and regions: inspiring examples to frame the future

Wednesday 9 October 2019, 11:30 – 13:00

The Square, Mont des Arts, Brussels

Translation in English, French and Spanish

Europe is ageing. Action is needed at all governance levels to review the way our society is organized and create a fair and sustainable society for all ages. The workshop will uncover why some ageing policies have been more successful than others and help cities and regions tap into the potential that older people present while also overcoming some of the constraints and challenges that urban environments often pose on older residents. This workshop will take its participants through inspiring examples on how to enhance healthy ageing and develop age-friendly cities and communities. It will also be an opportunity to discuss the success factors and barriers as well as to provide local and regional authorities with recommendations.

This workshop is co-organised by



advantAGE
MANAGING FRAILITY

AGENDA

Welcome by Anne-Sophie Parent, Secretary General of AGE Platform Europe and of the Covenant on Demographic Change

Opening by Markku Markkula, First President of the Committee of the Regions (tbc)

Key note speech: Adapting to population ageing: what are the main challenges ahead? by Erik van Ossenbruggen

Panel

- **Manchester:** an illustrative example from the Adapting European Cities to Population Ageing Project, by Paul Mc Garry
- **Krakow:** from decisions to concrete actions, by Jolanta Perek-Bialas
- Looking forward to the future of housing – **Homes4Life Project**, by Sylvia Urria Urriate
- Managing frailty: strategy and actions from the regional to the national level – **JA Advantage**, by Cinzia Gianmarchetti and Cristina Alonso

Discussion with participant

Conclusion and closing by Anne-Sophie Parent

Networking session (tbc)

The event is a partnership between:



Practical information

How to register?

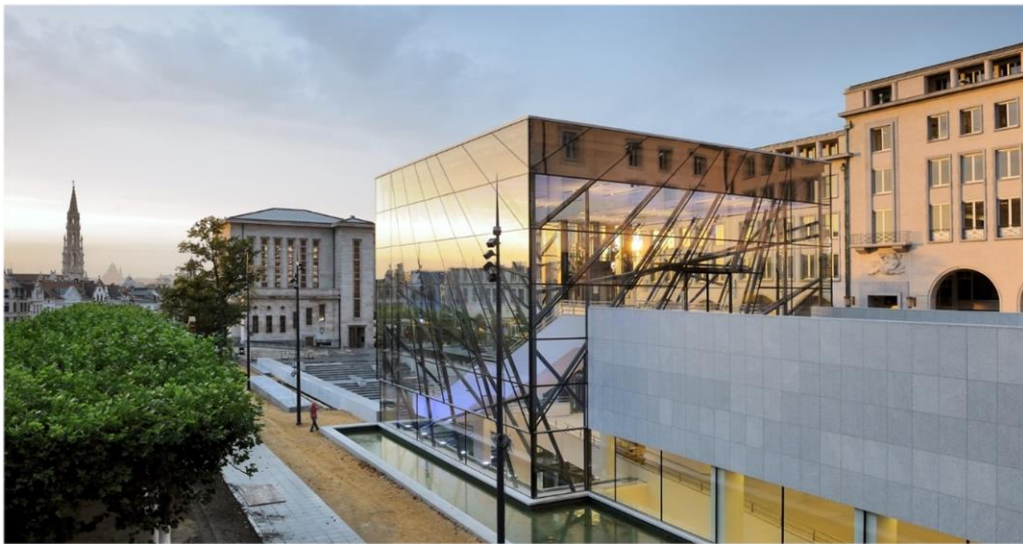
The registrations start on Monday 8 July and will be open up to 27 September. Please use the official link (you will need to create a special account if you are not already using the "ECAS" system):

https://europa.eu/regions-and-cities/programme/sessions_en

Contact persons

- Piera Petruzzi, piera.petruzzi@espon.eu
- Julia Wadoux, julia.wadoux@age-platform.eu
- Miguel Angel la Orden Montaña, miguelangel.orden@salud.madrid.org

How to reach the venue?



The Square is located in the city center of Brussels: Mont des Arts, 1000 Brussels

The nearest **metro station** is Gare Centrale (metro line 1/5) nearby the **Central Station** (Metro line 1/5), 3 minutes walking distance.

From the airport, you have direct trains to the Gare Centrale (20 min fare).

For persons with reduced mobility, there are **barrier free entrances**:
<https://www.square-brussels.com/en/about-us/access.html#walk>